

Carter's Farm

*A lovely, tranquil setting
for the home of your dreams*

- **Distinctive Residential Subdivision**

Carter's Farm is designed to be a distinctive residential subdivision," says Bob Cline, a well-known local developer, who knows what is important to you. "A great location with restrictions designed for quality homes and protection of your investment." You will be pleased when inspecting the size and quality of these homesites.

- **Homesites...Good Investment**

Homesites from .75 to 2.2 acres with gently rolling fields and large hardwoods; the variety of homesite selections makes **Carter's Farm** suitable for most any style home. Plus - a limited number of homesites are on the pond. This property has what it takes to become a great community. Real estate is always one of your best investments and **Carter's Farm** is prime real estate.

- **Location...Protection...Seclusion**

Go east from I-40/I-77 Junction at Statesville, NC, bear right at the first exit - Exit 153 - onto Hwy. 64. Travel east on Hwy. 64 to the 5th traffic light. Turn right on Bell Farm Road. Go 1 mile and turn right on Skyland Drive. Travel 4/10 mile and turn right into **Carter's Farm**. Look for signs! Skyland Drive and **Carter's Farm** have no thru traffic! You have secluded quietness with major roads still close by. You are just minutes from Eastgate Commons, The Shoppes on Broad Street and Signal Hill Mall.

- **Great Utilities, Low Taxes**

Underground Utilities • Low Iredell County Taxes!
Electric Service by Energy United • BellSouth Services • Cable
Iredell County Water • Fire Hydrants
Septic approval to the developer has been given on every lot.

Piedmont Auction & Realty
Bob Cline, Developer/Agent
141 Cedar Lake Drive
Statesville NC 28625

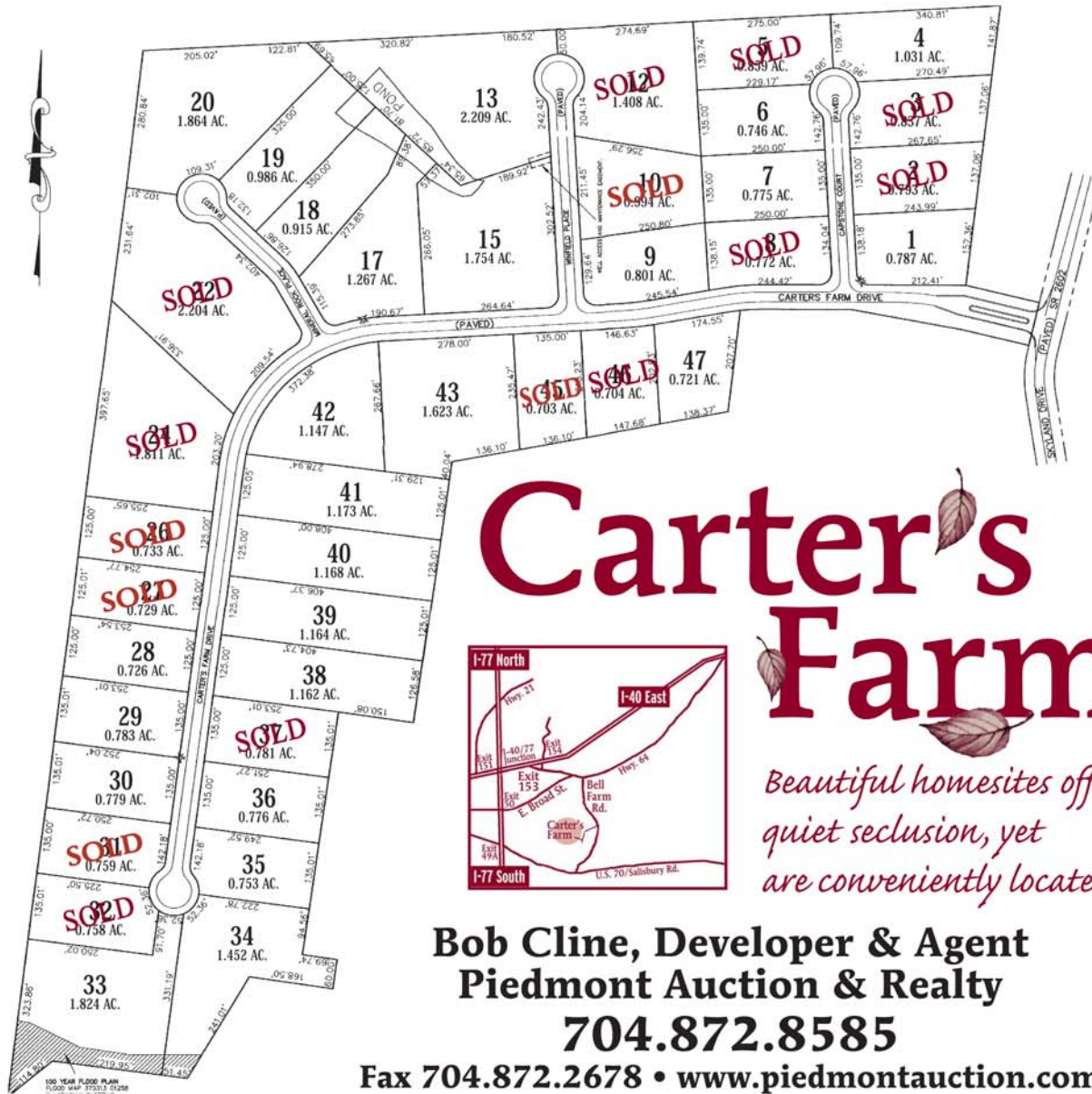


**Come and Visit
This New Subdivision**

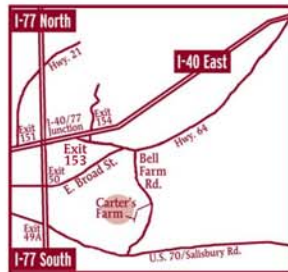
Announcing...

Carter's Farm

**A New, Restricted Residential
Subdivision in a lovely, tranquil,
secluded setting...yet conveniently
close to major highways, shopping,
schools, hospitals, business and
industry just east of
Statesville, NC off Bell Farm Road**



Carter's Farm



Beautiful homesites offer quiet seclusion, yet are conveniently located!

**Bob Cline, Developer & Agent
Piedmont Auction & Realty**

704.872.8585

Fax 704.872.2678 • www.piedmontauction.com



Choose from wooded and open lots in this lovely, tranquil setting.



Carter's Farm features gently rolling hills and large hardwoods. Homesites range from .75 to 2.2 acres.



Cul de sacs create variety of homesites and prevent thru traffic.



A limited number of homesites have pond access.